

Probing System with GM Mechanical Refrigerator

Data Sheet

- ▶ SHI RDK101 Cold Head
- ▶ 100VAC Air Cooled Compressor
- ▶ Mini Station Configuration, 1/2" Sample
- ▶ Refrigerator Floating Mount, No anchoring required.
- ▶ Achieved Temperature <15K
- ▶ Sample Holder Vibration Level < 1 μ m
- ▶ Measurement Base < 1pA

■ System Construction

1. 4K GM Cryo Cooler
2. Probe Vacuum Chamber
3. Temperature Control Unit
4. 4 Probe Manipulators
5. CCD Camera & Mono Scope
6. LCD Monitor
7. System Stand
8. Vacuuming Pump



■ General Specification

☆ Temp. Range	: Below 15K ~ 300K (0.1W@4.2K Ref System)
☆ Power Consumption	: ~ 1,500 W
☆ Sample Size	: 12mm x 12mm
☆ Probe Stroke	: X, Y \pm 6.5 mm Z \pm 4 mm
☆ Feed through	: 4 Triaxial Connectors
☆ Vacuum	: ~ 10 ⁻⁴ Pa
☆ System Size	: W720mm x D700mm x H1300mm



AXIS Corporation



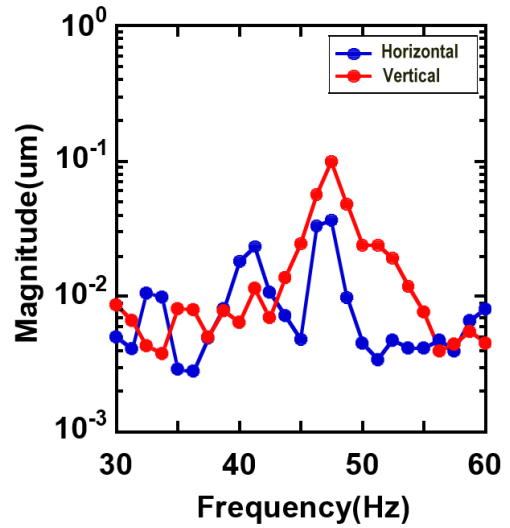
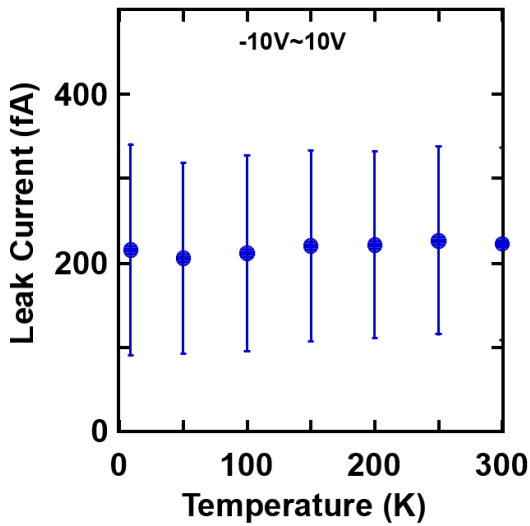
Kreuz Design Inc.

646-2 Sasagi Tsukuba Ibaraki 305-0043 JAPAN
TEL 029-849-2220 FAX 029-849-2221
info@axj.co.jp http://axj.co.jp

2393 Welcher Ave., unit 302
Port Coquitlam, British Columbia V3C 1X6
Tel :+1 604 945 6639; Fax: +1 604 229 6156
e-mail: epistle@kreuz.com

Please contact our office for sales inquiry

■ Measurement Data



■ Cryocooler Specifications

- | | | |
|---|-------------------|-------------------------------|
| * 4K Cooler System (SHI Cryo - SRDK-101D/CNA11) | Cooling Capacity | : 0.1 W @4.2K |
| * Power Consumption ~1.5 KW | Power Requirement | : 1 Phase, 120, 240 VAC |
| * Maintenance 10,000 hrs | Ultimate Temp. | : below 4.2K (with no load)** |
| * Air Cooling | Weight | : 75kg (Compressor) |

■ System Reference Drawing

